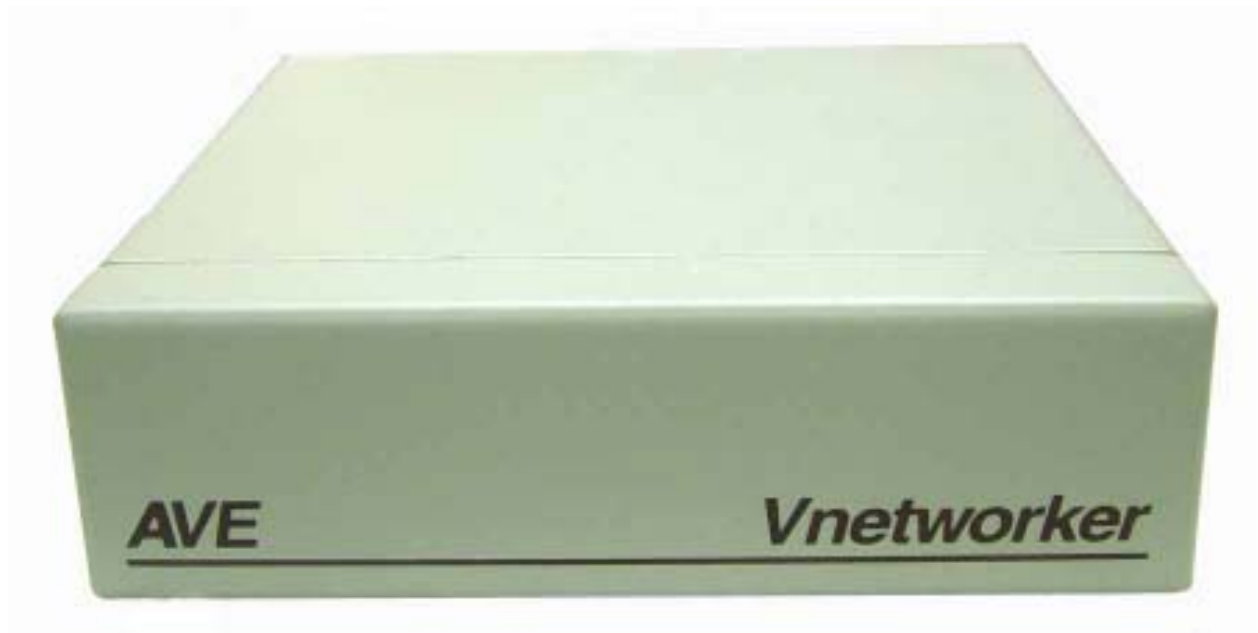


Vnetworker



Installation and Operation Manual



January 2007



CAUTION!
RISK OF ELECTRICAL SHOCK!
DO NOT OPEN!



TO PREVENT ELECTRIC SHOCK, DO NOT REMOVE THE COVER. DO NOT EXPOSE THE EQUIPMENT TO RAIN OR MOISTURE. NO USER SERVICEABLE PARTS ARE INSIDE. REFER SERVICING TO QUALIFIED PERSONNEL.

WARNING!

THIS EQUIPMENT GENERATES, USES, AND CAN RADIATE RADIO FREQUENCY ENERGY AND IF NOT INSTALLED AND USED IN ACCORDANCE WITH THE INSTRUCTION MANUAL MAY CAUSE INTERFERENCE TO RADIO COMMUNICATIONS. IT HAS BEEN TESTED AND FOUND TO COMPLY WITH THE LIMITS FOR A CLASS A COMPUTING DEVICE PURSUANT TO SUBPART J OF PART 15 OF FCC RULES, WHICH ARE DESIGNED TO PROVIDE REASONABLE PROTECTION AGAINST SUCH INTERFERENCE WHEN OPERATED IN A COMMERCIAL ENVIRONMENT. OPERATION OF THIS EQUIPMENT IN A RESIDENTIAL AREA IS LIKELY TO CAUSE INTERFERENCE IN WHICH CASE THE USER AT HIS/HER OWN EXPENSE WILL BE REQUIRED TO TAKE WHATEVER MEASURES MAY BE REQUIRED TO CORRECT THE INTERFERENCE.

AVE Multiview UK

**Unit 1C, The Potteries,
Woodgreen Road, Waltham
Abbey Essex, EN9 3SA, UK
Tel: 440-870-770-9323
Fax: 440-870-770-9363
Email: ave-uk@multiview.net
www.multiview.net**

AVE Multiview USA

**2000 West Governors Circle
Suite E, Houston, Texas 77092
Tel: 1-281-443-2300
Fax: 1-281-443-8915
Email: sales@aveusa.com
<http://www.americanvideoequipment.com>**

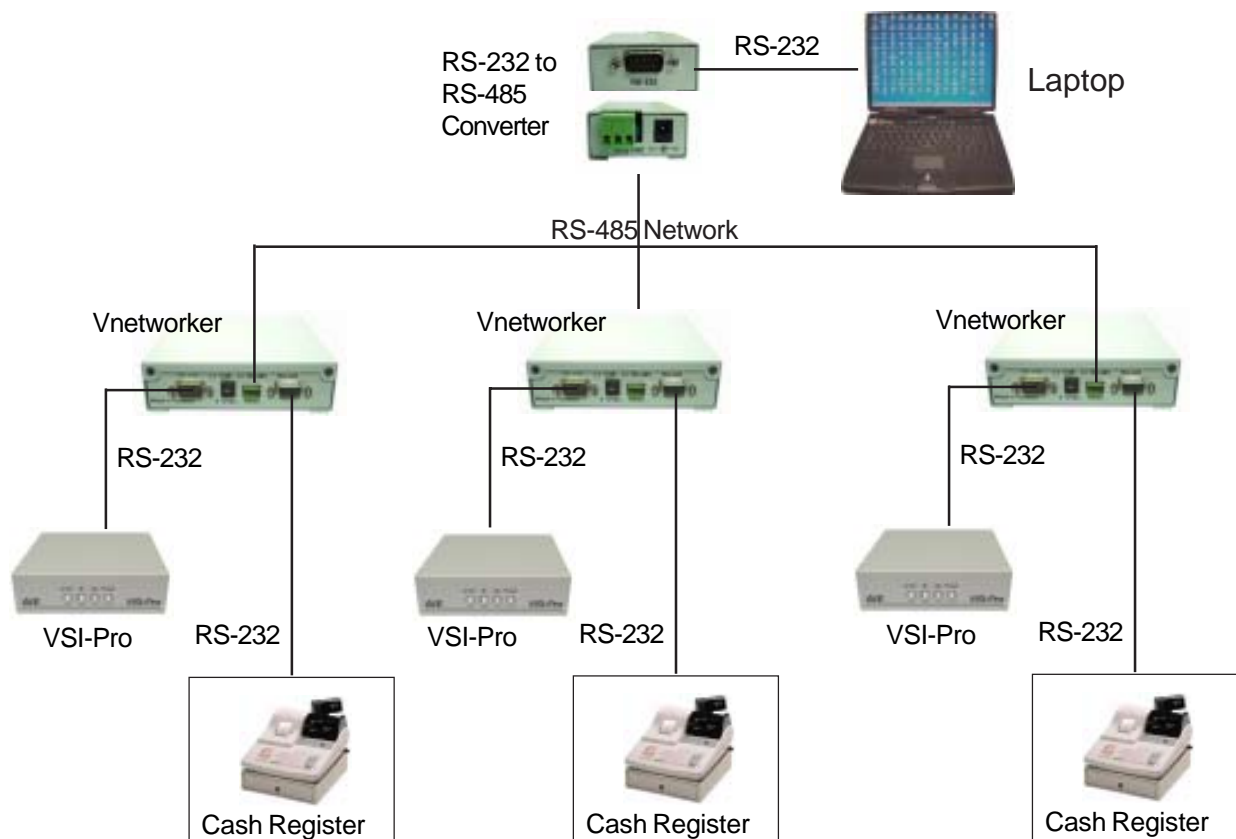
AVE (Thailand) Co., Ltd.

**217/4 Crystal Garden, Soi 4 (Nanatai)
Sukhumvit Rd., Klongtoey, Klongtoey
Bangkok 10110 Thailand
Tel: 662-656-8231
Fax: 662-656-9554
Email: ave@avethailand.com
<http://www.ave.co.th> (Thai)
<http://www.avethailand.com> (English)**

Introduction

The Vnetworker connects inbetween a VSI-Pro and the Cash Register via RS-232. The Vnetworker is similar to the Networker and Regcom which take the RS-232 data and put it on a common RS-485 network and send back to a DVR or PC. This network supports up to 64 Vnetworkers. The Vnetworker is an enhanced version of the Networker and is able to program the VSI-Pro remotely along with gathering the transaction or exception data. The VSI-Pro must be Ver. 13.00 or 13.24 and Release 12 or higher. Any VSI-Pro Ver. 13.00 or 13.24 can be upgraded with a uP software change for the hardware of the VSI-Pro remains the same.

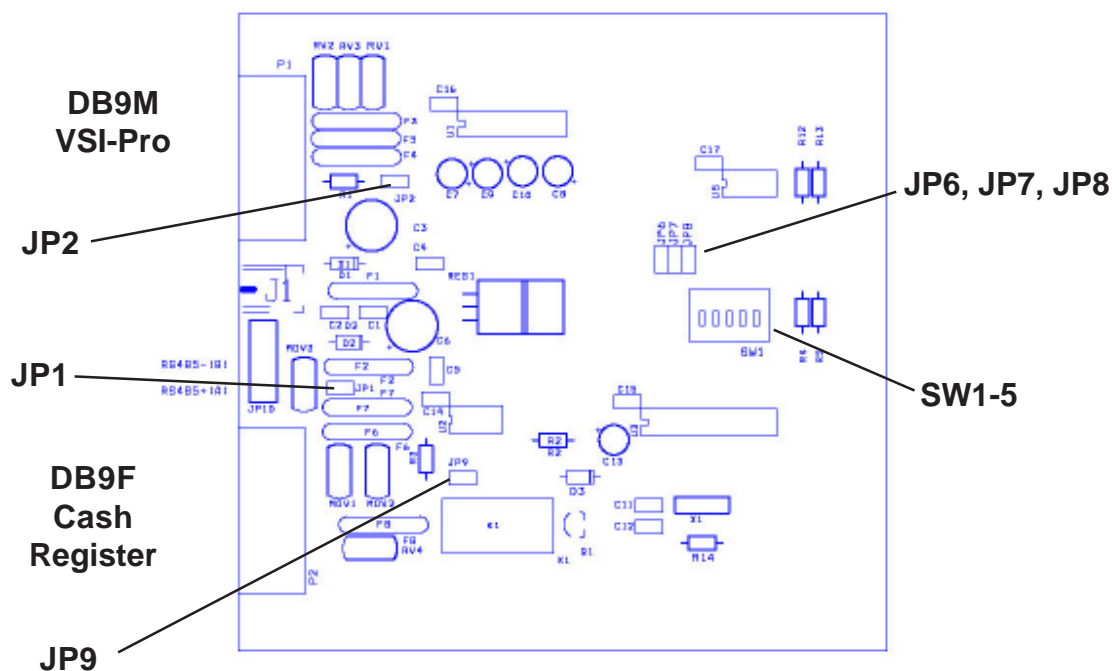
Laptop Connection



VSI / VSI+ / VSI-Pro Backward Compatibility

Since 1990 various versions of the VSI have been on the market solving cash register retail problems. Several special versions are available to interface to other RS-232 devices like scales, coin counters, PLCC, gambling machines and ATMs along with countless other generic RS-232 devices. The first VSI, Version 9 had no exception processing until the release of Version 10. However these versions had the ability to output the data so are compatible with the Regcom line of networking adapters. As features increased we moved to the VSI+ Version 11, which had the first powerful set of exception processing and printing functions. This version also had hardware handshaking capability which allows it to be fully operational with the Networker and Regcom line. The introduction of the VSI-Pro Version 12 added on-screen selection of various model registers for ease of installation and supported many characters sizes for multiple units to display data on one camera view. This version also supports the Networker and Regcom products. The current VSI-Pro Version 13.XX has improved features and additional registers and the Version 13.00 supports North America cash registers and Version 13.24 supports UK and European models. All Version 13.XX VSI-Pro support the Networker and Regcom products. All Version 13.XX can be upgraded to the latest Release 12. This latest software adds PC Programming capability, Firmware update externally and Vnetworker support along with Networker, Vnetworker and Regcom compatibility.

Vnetwerker Internal Jumper Selections



Jumper Settings Default (in bold type)

JP1	OPEN / CLOSE	12VDC to DB9M Pin 9 On/Off
JP2	OPEN / CLOSE	DTR True to DB9M Pin 4 On/Off
JP6	OPEN / CLOSE	ALARM 1 Read On/Off (Unsupported)
JP7	OPEN / CLOSE	ALARM 2 Read On/Off (Unsupported)
JP8	OPEN / CLOSE	Bank Select 0/1 (See Address Setting)
JP9	OPEN / CLOSE	RS485 Termination On/Off with 120 Ohm
SW1-5	OPEN / CLOSE	Address Selection (See Address Setting)

DB9F To Cash Register or RS-232 Device and/or DB9M To VSI-Pro

1 -----	Alarm 1
2 -----	DB9F RXD, DB9M RXD Looped to DB9F or TXD Controlled by Vnetwerker
3 -----	RXD
4 -----	DTR
5 -----	GND
6 -----	N/C
7 -----	CTS Output Control
8 -----	N/C
9 -----	12VDC or ALARM 2

Cable Connection

Vnetwerker	VSI-Pro
DB9F	DB9M
RXD 2 -----	3 TXD
TXD 3 -----	2 RXD
GND 5 -----	5 GND
CTS 7 -----	7 RTS

Vnetwerker	RS-232 Device
DB9M	
RXD 2 -----	TXD
TXD 3 -----	RXD
GND 5 -----	GND

This connection will be the same as the VSI-Pro to the RS-232 device

ADDRESS SELECTION

Each Vnetworker unit on the RS-485 network must be set with a unique network address. The address is selected using Switches No. 1 - 5 from the bank of DIP switches inside of the unit. Changing address will be effective before power up only.

The address must correspond to the DVR channel or camera number that the text is to be associated with.

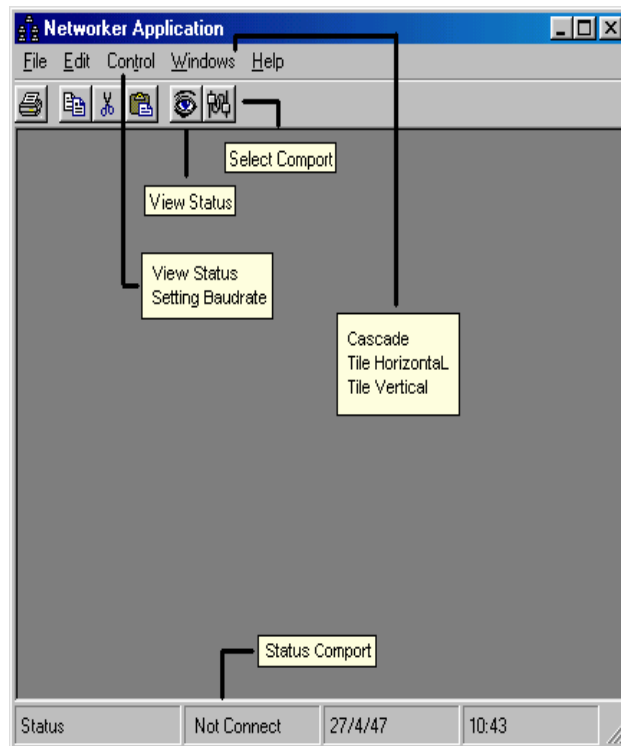
JP8=Off Address	JP8=On Address	Dipswitch				
		5	4	3	2	1
0	32	Off	Off	Off	Off	Off
1	33	Off	Off	Off	Off	On
2	34	Off	Off	Off	On	Off
3	35	Off	Off	Off	On	On
4	36	Off	Off	On	Off	Off
5	37	Off	Off	On	Off	On
6	38	Off	Off	On	On	Off
7	39	Off	Off	On	On	On
8	40	Off	On	Off	Off	Off
9	41	Off	On	Off	Off	On
10	42	Off	On	Off	On	Off
11	43	Off	On	Off	On	On
12	44	Off	On	On	Off	Off
13	45	Off	On	On	Off	On
14	46	Off	On	On	On	Off
15	47	Off	On	On	On	On
16	48	On	Off	Off	Off	Off
17	49	On	Off	Off	Off	On
18	50	On	Off	Off	On	Off
19	51	On	Off	Off	On	On
20	52	On	Off	On	Off	Off
21	53	On	Off	On	Off	On
22	54	On	Off	On	On	Off
23	55	On	Off	On	On	On
24	56	On	On	Off	Off	Off
25	57	On	On	Off	Off	On
26	58	On	On	Off	On	Off
27	59	On	On	Off	On	On
28	60	On	On	On	Off	Off
29	61	On	On	On	Off	On
30	62	On	On	On	On	Off
31	63	On	On	On	On	On

Address Selection Dipwitch Setting

Vnetworker Software Installation

Install program from the CD-ROM "E:\Software\Vnetworker\Setup.exe". Follow the instructions of installation from the presented dialog boxes. If additional information is needed review the Software Manual for the Vnetworker Software. When you have finished the installation of the software, then run the Vnetwoker software. You will see the following Dialog Box.

How to use the Program Networker Application



Menu File:

Print

Menu Edit:

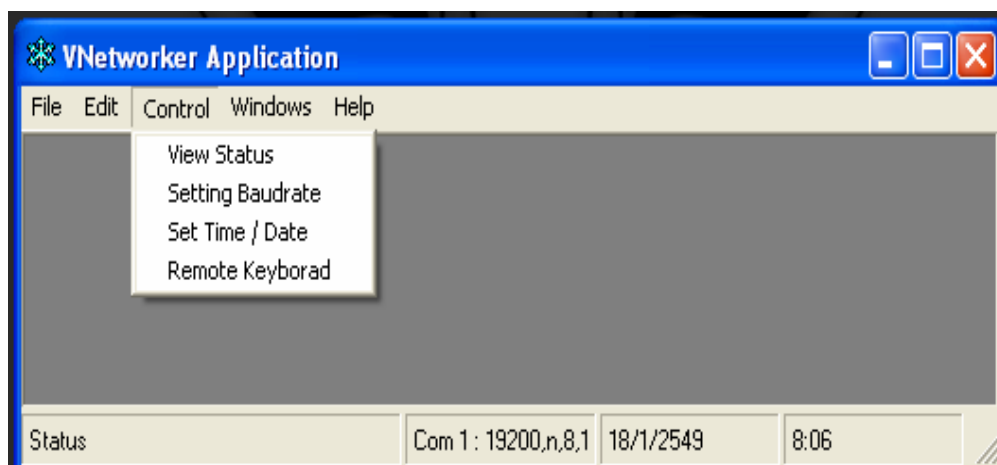
Cut
Copy
Paste

Menu Control:

View Status
Setting Baudrate
Set the Time / Date
Remote Keyboard

Menu Window:

Cascade
Tile Horizontal
Tile Vertical

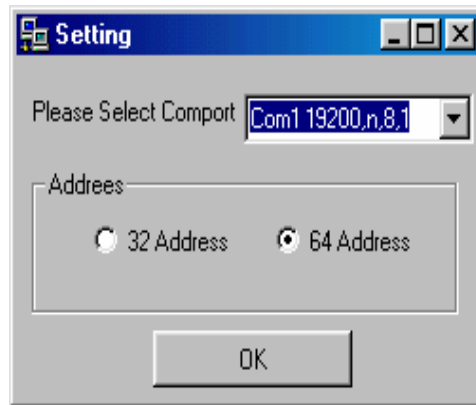


Control:

- View Status for view led status if you select 32 Address Status windows 32 will be shown
- Setting Baudrate for resetting The Setting windows will be show
- Set Time / Date for Set Clock and Read Clock function.
- Remote Keyboard for Programming VSI-Pro

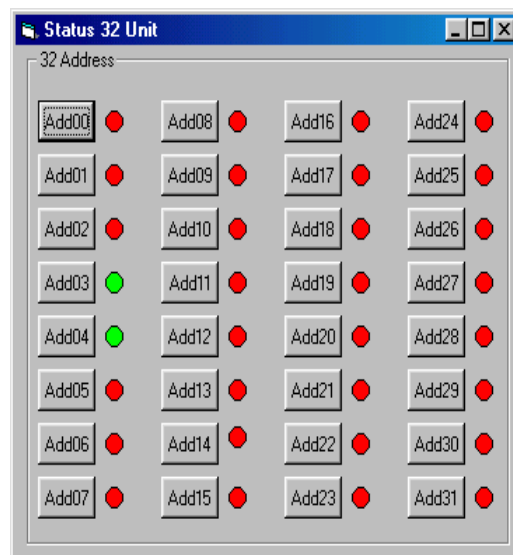
Select ComPort

From this pulldown menu you can select the ComPort and baudrate. The default baudrate is 19.2K for the Vnetworker system. The ComPort is dependent on your computer.



View Status

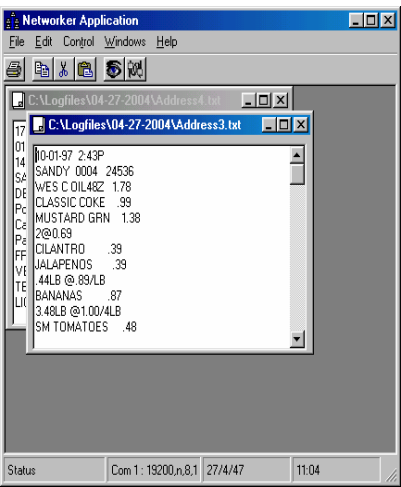
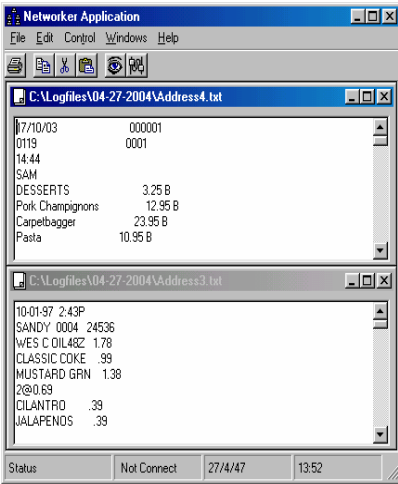
Pull Down the Window to select ComPort and select 32 Address when using less than 32 registers and select 64 if using more than 32 registers.



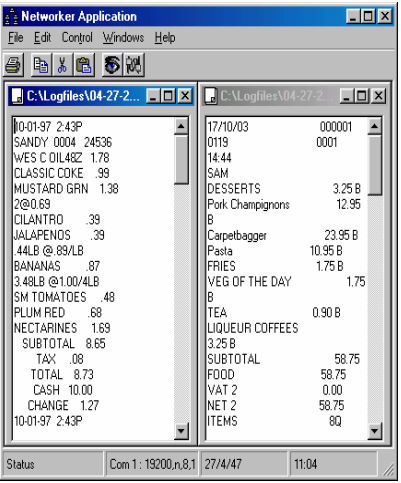
The **Green** Led is indicated when a Networker is Detected.
The **Red** Led is indicated no Networker at that Address.

Windows

Windows Cascade



Windows Tile Horizontally



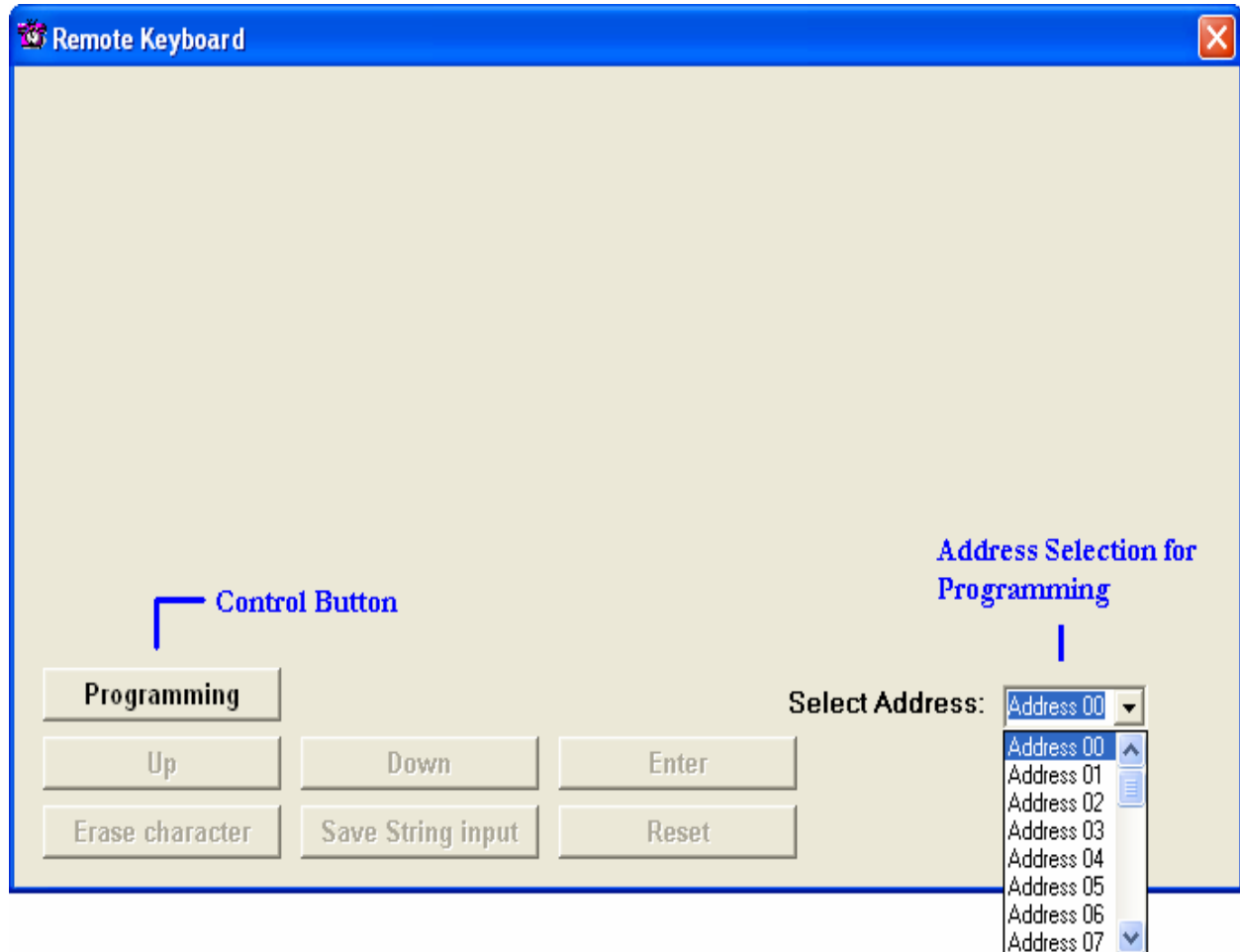
Windows Tile Vertically

Files:

C:\Logfiles directory contains all the files with the name extension Address1.txt, Address2.txt, etc corresponding to the address of the Networker. These files are updated continuously. If you copy and then delete the file, a new log file will be created with the same number as new data is recieved. Viewing the files is updated every 2 seconds.

Remote Keyboard

Selection of the remote keyboard allows you to access any of the Vnetworkers on the network which controls the VSI-Pro into the programming mode. During programming time all data from the cash register to the VSI-Pro will be lost for disconnected from the VSI-Pro until released from programming.

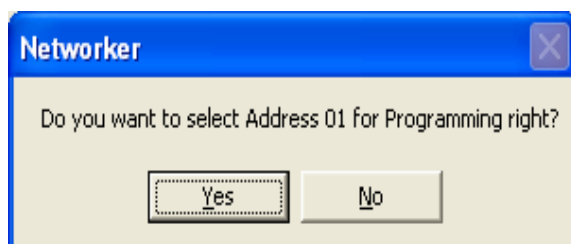


Control Button

- Programming
- Up
- Down
- Enter
- Erase Character
- Save String Input
- Reset

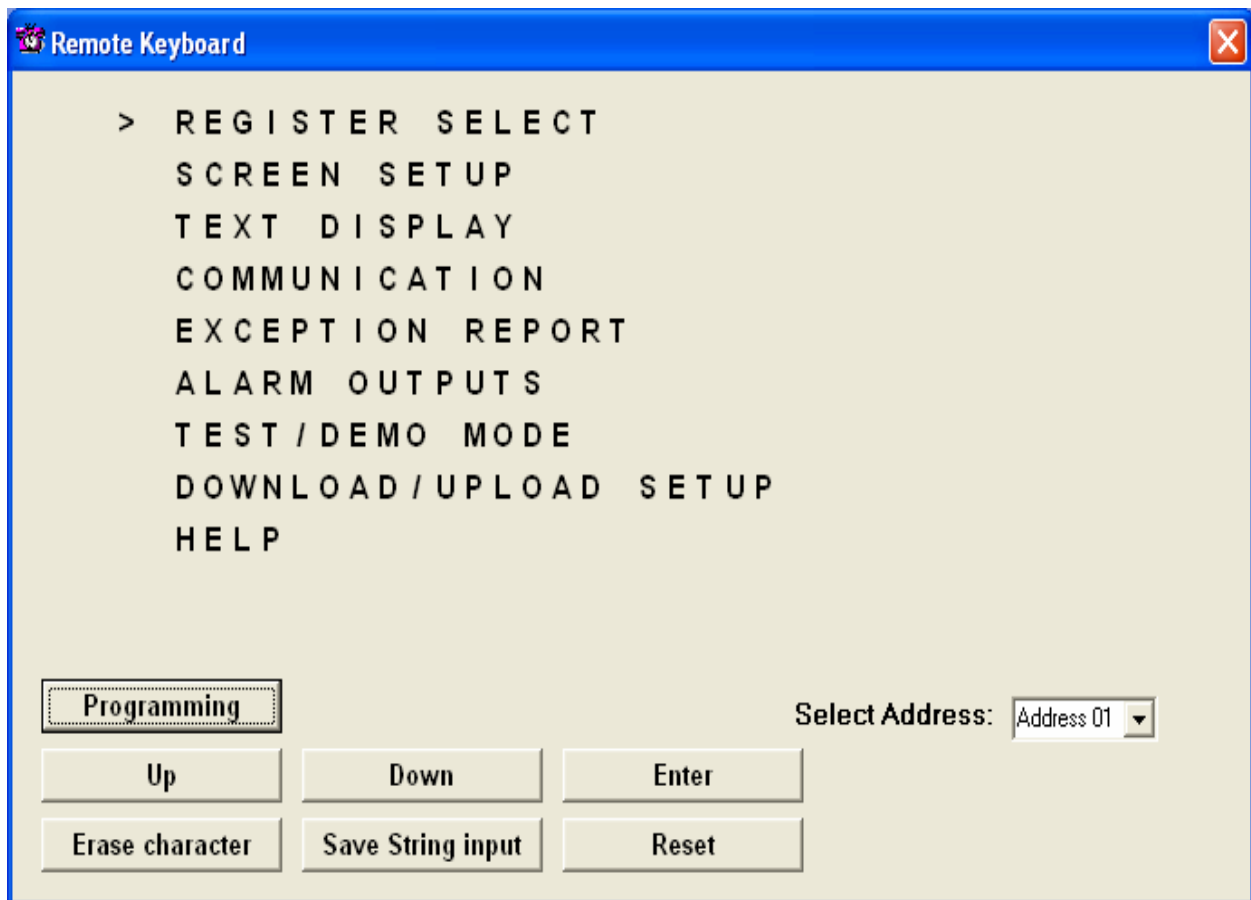
Address Select :

You should select the address for Programming, then press the Programming Button



Address Confirmation Window

Upon accessing a valid address of a Vnetworker and connected to a VSI-Pro Ver. 13.XX Rel. 12 or higher the following screen will be presented. The menu presented is identical to the local programming mode of the VSI-Pro. Clicking the Up, Down, Enter and Reset buttons on the software is exactly like pressing the front panel buttons of the VSI-Pro.

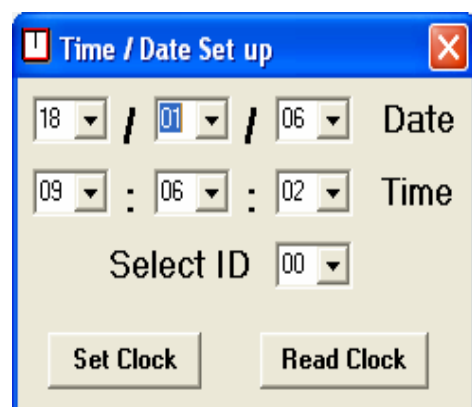


Special buttons like Erase Character and Save String Input allow for the combination buttons used in the local VSI-Pro programming mode. Programming features like OSD display position will be slightly different than the local mode since no video feedback is presented in this programming mode.

NOTE: When in the VSI-Pro Programming mode the Cash Register or RS-232 device is disconnected from the VSI-Pro. Therefore any data sent by the cash register while in the programming mode will be lost.

Setting Time & Date

This window allows you to read or set the Time/Date of any VSI-Pro. First select the ID or address of the VSI-Pro. Click "Read Clock" for the current T/D set in that particular VSI-Pro. If you wish to change the T/D then set the T/D in the selections provided and click "Set Clock".



LIMITED WARRANTY

(Terms and Conditions)

For **2 Years** from the date of shipment, Seller warrants to Buyer that the Product is free from defects in material or workmanship **under normal use and service**. Equipment manufactured by other than Seller but furnished by Seller carries the same warranty to Buyer as Seller receives from the other manufacturer, notwithstanding any provision to the contrary. If Buyer has specified a particular manufacturer's product which is not the brand standardly supplied by Seller, Buyer shall look only to the other manufacturer's warranty and Seller shall not warrant such item.

EXCLUSIONS. Seller's warranty does not cover the following :

1. In-transit damage claims, improper handling by carrier or post office.
(Only the consignee of the shipment can file a claim with the common carrier.)
2. Damages caused by incorrect use, modification, carelessness, improper storage, hostile operating conditions, or unauthorized service, installation or repairs without proper training from the Seller.
3. Damages caused by fire, flood, lightning, collision, acts of God or other events beyond the control of Seller.
4. Products or parts thereof that have had serial numbers removed, altered or defaced.
5. Products returned without an RMA number and sales or delivery receipt showing the date of original purchase.
6. Use of components that do not meet Seller's specifications.
7. External parts such as cabinets or keypads.
8. Periodic maintenance and adjustments resulting from normal use.

WARRANTIES EXCLUDED, SELLER EXPRESSLY DISCLAIMS AND EXCLUDES ANY EXPRESS OR IMPLIED WARRANTY OR MERCHANTABILITY OR FITNESS FOR A PARTICULAR PURPOSE WHICH EXCEEDS OR IS INCONSISTENT WITH THE WARRANTY HEREIN EXPRESSLY SET FORTH.

NON-WARRANTY CLAIMS

In the event Buyer makes a warranty claim and Seller's warranty does not apply, Buyer shall reimburse Seller for all reasonable expenses incurred by Seller in diagnosing the installation/repair problem.

BUYER'S EXCLUSIVE REMEDIES

If the Product supplied shall fail to conform to the contract or any applicable warranty, Buyer shall immediately notify Seller of such condition and afford Seller a reasonable opportunity to inspect said Product. Seller shall, at its option, either repair or replace such nonconforming Product. Seller shall not be responsible for labor charges for removal or installation of such equipment or material or charges for transportation, handling and shipping except as provided in Seller's written service policy. No Product shall be returned without Seller's prior written consent.

SELLER SHALL NOT BE LIABLE FOR ANY SPECIAL, DIRECT INCIDENTAL OR CONSEQUENTIAL DAMAGES OF A COMMERCIAL NATURE ARISING OUT THE USE OF OR INABILITY TO USE SELLER'S PRODUCT BY REASON OF THE FACT THAT SUCH PRODUCT DOES NOT CONFORM TO THE CONTRACT OR TO ANY EXPRESS OR IMPLIED WARRANTY. SELLER'S MAXIMUM LIABILITY SHALL BE LIMITED TO THE COST OF REPAIR AND/OR REPLACEMENT OF THE PRODUCT CLAIMED TO BE DEFECTIVE OR NONCONFORMING, SUBJECT TO SELLER'S RIGHT OF REMOVAL AND RETURN OF PRODUCT.

All of the foregoing constitute Buyer's sole and exclusive remedy and Seller's sole and exclusive liability for supplying nonconforming or defective Product.

RETURNS

AVE products are fully inspected and carefully packed to ensure you are delivered a quality product in good condition. If you are not fully satisfied with our product, returns of standard stocking items with no restocking fee can be made within thirty (30) days of invoice to Buyer. All such returns must have prior consent of Seller by obtaining an RMA number and must include the sales or delivery receipt showing the date of original purchase and be in an unused condition contained in its original packaging. Any other returns must have prior written consent of Seller and are subject to a restocking fee of fifteen percent (15%) and freight charges.

RMA NUMBER

The RMA (Return Material Authorization) number must be obtained by contacting Seller prior to the shipment of the product for return. The RMA number is valid only for 15 days from the date of issue. The RMA number must be clearly displayed on all shipping labels.



ASIA

AVE (Thailand) Co., Ltd.

217/4 Crystal Garden
Soi 4 (Nanatai), Sukhumvit Road
Klongtoey, Klongtoey
Bangkok, 10110 Thailand
Tel: 662-656-8231
Fax: 662-656-9554
Email: ave@avethailand.com
www.avethailand.com

NORTH AMERICA

American Video Equipment (AVE)

2000 West Governors Circle, Suite E
Houston, Texas 77092
Tel: 281-443-2300
Fax: 281- 443-8915
Email: aveus@ave-us.com
www.americanvideoequipment.com

WESTERN EUROPE

AVE Multiview

Unit 1C, The Potteries,
Woodgreen Road, Waltham Abbey
Essex, EN9 3SA, UK
Tel: 440-870-770-9323
Fax: 440-870-770-9363
Email: ave-uk@multiview.net
www.multiview.net